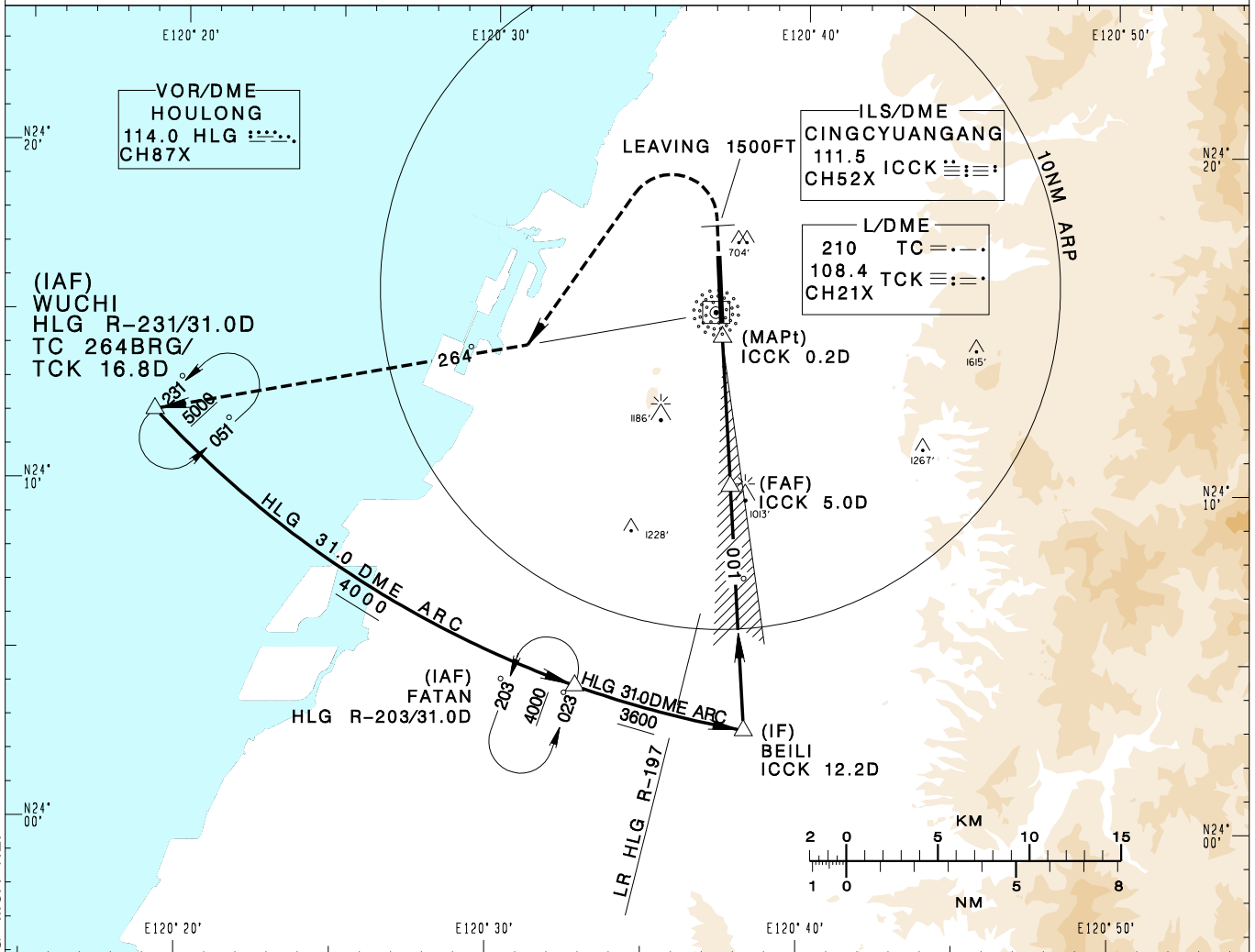


臺中/清泉崗機場
TAICHUNG/CINGCYUANGANG AD

RCMQ
LOC RWY36

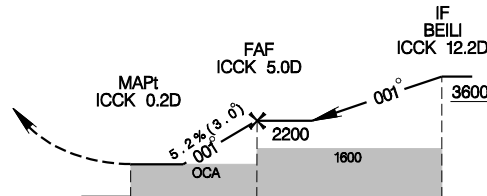
TAIPEI APP 130.1 129.6	TAICHUNG TWR 118.75 120.25	ATIS 127.75	VAR 5°W-2022	13600'
Apt Elev: 665' Rwy36 THR Elev: 663' Trans Level: FL130 Trans Alt: 11,000'				

BEARINGS ARE MAGNETIC; DISTANCES ARE NAUTICAL MILES; ELEVATIONS, HEIGHTS IN FEET



DIST to ICCK	2DME	3DME	4DME	5DME
ADVISORY ALT	1290	1610	1930	2200

MISSED APCH:
CLIMB RWY HDG TO 1500FT,
TURN LEFT TO TRACK
TC 264BRG TO WUCHI;
CLIMB TO 5000FT AND HOLD.



NM FROM ICCK

MINIMA (OCA IN FT, VIS IN M, OCH IN FT)

CATEGORY	A	B	C	D	NOTE CIRCLING NOT AUTHORIZED EAST OF RWY. *DME REQUIRED.
STRAIGHT IN	1260/RVR ¹²⁰⁰ 595	1260/1600 595	1260/2000 595	1260/2000 595	
STRAIGHT IN (ALS OUT)	1260/1600 595	1260/1600 595	1260/2700 595	1260/2700 595	
CIRCLING	1360/1900 695	1360/2800 695	1600/4400 935	1600/4800 935	